

# Wayne Lee

Technical Rider (Client Supplies)

## **Comedy Hypnosis Show & Motivational Presentation** ***(Audiovisual/Technology/Production Requirements)***

The audiovisual/technology/production requirements, as stated below, are considered a part of the Engagement Agreement. THE CLIENT shall supply WLE with the following production requirements for the engagement (see attached Stage/Floor Plan):

### ***Staging:***

- Stable raised stage area (preferred is 24' x 12' and 3' to 4' high).
- Black backdrop (preferred but not mandatory).
- 20 sturdy armless chairs with backs.
- Set of sturdy stairs for audience participants to get on and off the stage.

### ***Lighting:***

- Adequate lighting to light the entire stage area.

### ***Audio:***

- Professional P.A. system that must include adequate front-of-house speakers and stage monitors.
- A sound mixing board with 2 inputs for Wayne's remote control music system and his microphone.
- Wayne requires a space (2' x 2') for his remote control music system to be placed on the stage where it is visible to Wayne during his performance.

### ***Electricity:***

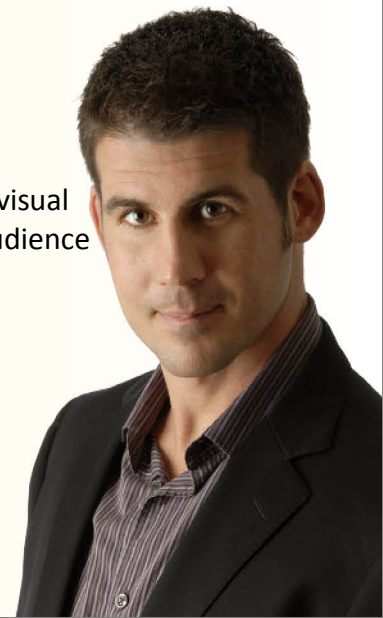
- 2 plug-ins for Wayne's microphone and remote control music system.

### ***Miscellaneous Materials for Empowerment Presentation Only:***

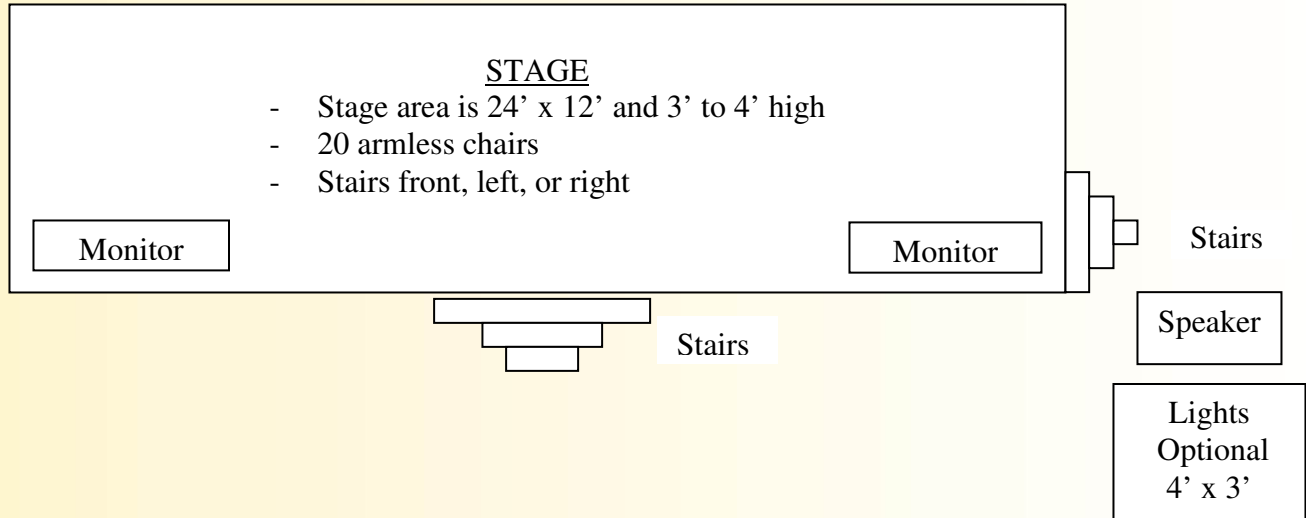
- Pens/pencils for audience participants.

For audience sizes of 300+, it is recommended that THE CLIENT contact an audiovisual company to arrange for a projection screen to ensure optimum viewing for all audience members.

WLE will set up approximately 90 minutes before the engagement time, unless otherwise specified. During this time, a sound and lighting check will take place.



## Stage/Floor Plan



### Seating Area can be arranged as:

- Cabaret style (tables & chairs)
- Theatre style

Note: It is preferred to have the audience close to the stage (ie. 5' to 10' away)

Lights  
When used  
6' space required

